

QUICK START USER MANUAL

# MagicView SaaS

6.0 Plus

## Revision History

Version	Date	Remark
1.0	2016/06/14	Initial release

## Table of Contents

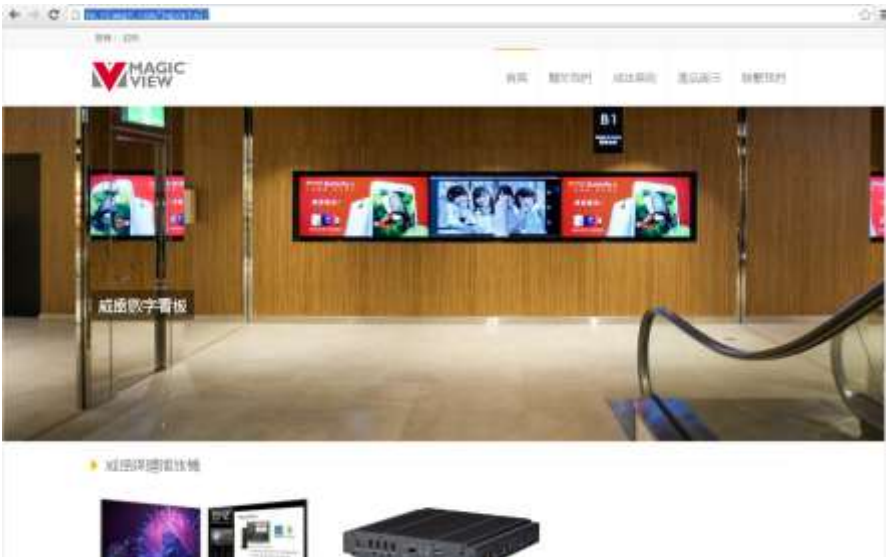
<b>1. Quickstart Tutorial</b> .....	<b>4</b>
1.1. Register account online .....	4
1.2. login .....	6
1.3. Player register online .....	6
1.4. Video Wall .....	11
1.4.1. Set to soc group.....	12
1.4.2. Use ChromeWall Utility to config video wall layout .....	12
1.5. Playlist Publish .....	17
1.5.1. Upload media files .....	17
1.5.2. Create playlist .....	19
1.5.3. Schedule.....	23
<b>2. Player OSD Setting</b> .....	<b>26</b>
2.1. Network Setting .....	26
2.2. Server Register.....	28
2.3. Local Playback .....	29
2.4. General Setting .....	30
<b>3. Appendix</b> .....	<b>37</b>
3.1. Player install BSP .....	37

# 1. Quickstart Tutorial

This section demonstrate the process of registering account and player, creating and publishing a playlist which allows you to quickly master the main process of designing and publishing.

## 1.1. Register account online

Step 1. Open web browser and input the URL of Portal. Such as **“<http://tw.viamgv.com>”**



Step 2. Click **“Register”** button :



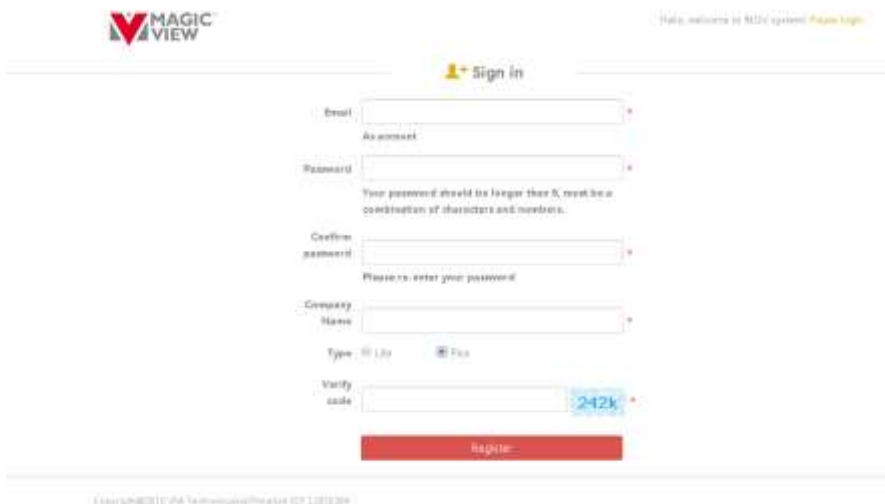
**簡易版**

- 功能簡單易學習
- 發佈步驟簡單快速
- 適合單用戶管理小規模播放機

**專業版**

- 增強的管理功能
- 完善的審核和存取控制
- 適合多用戶多部門協助管理大中規模播放機

Step 3. Choose the type as Plus and click button “Register Now!” :



**MAGIC VIEW** Help, welcome to M2V system! Please login.

**Sign in**

Email

As promised

Password

Your password should be longer than 8, must be a combination of character and numbers.

Confirm password

Please re-enter your password

Company Name

Type:  Lite  Plus

Verify code  242k

**Register**

Copyright © 2010-2014 YK Embedded. All rights reserved.

Step 4. Fill in the information, "\*" as required. Click "Register" and the system will send the activation mail to registered mailbox. Users need to activate before login.

## 1.2. Login

Click "login" in the portal home page, enter the user name, password and authentication code.



The screenshot shows the login interface for the Viamgv system. At the top left is the 'MAGIC VIEW' logo. At the top right, there is a link for 'Help: welcome to MGV system' and a 'Logout' link. The main heading is 'Login'. Below this, there are three input fields: 'User name' containing '51989021@qq.com', 'Password' with masked characters, and 'Verify code' which is empty. To the right of the 'Verify code' field is a blue 'QR Code' button. Below the input fields are two links: 'Forgot Password' and 'Register'. At the bottom of the form is a large red 'Login' button. At the very bottom of the page, there is a small copyright notice: 'Copyright © 2016 VIA Technology Limited. All Rights Reserved'.

## 1.3. Player register online

Step 1. Ensure that the network can be connected to the cloud, and to ensure that the firewall can access **tw.viamgv.com**. Connect player power and network cable, bootup system and the QR code will display in the screen:



Note :

The default server address is [tw.viamgv.com](http://tw.viamgv.com). If you modify the URL, use the keyboard hotkey to evoke OSD menu, and set general attributes:

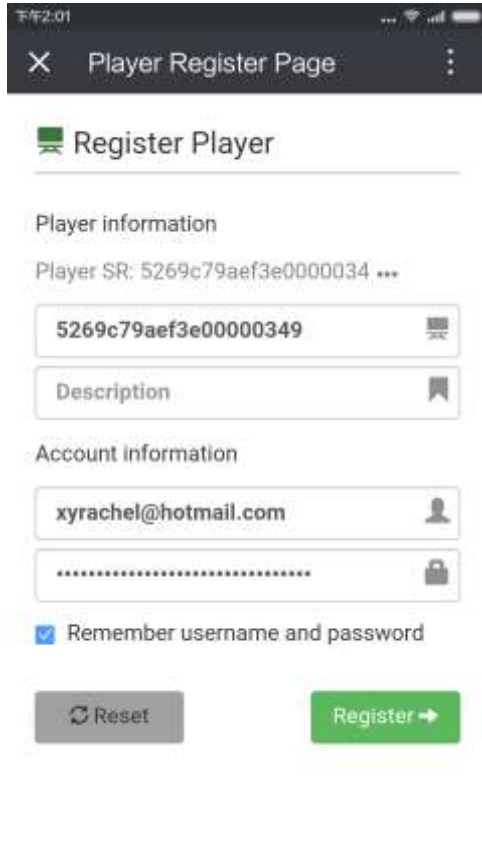




After the modification, press the "Q" key to return to the first level last page and click on "server registration" to return to the player registration page.

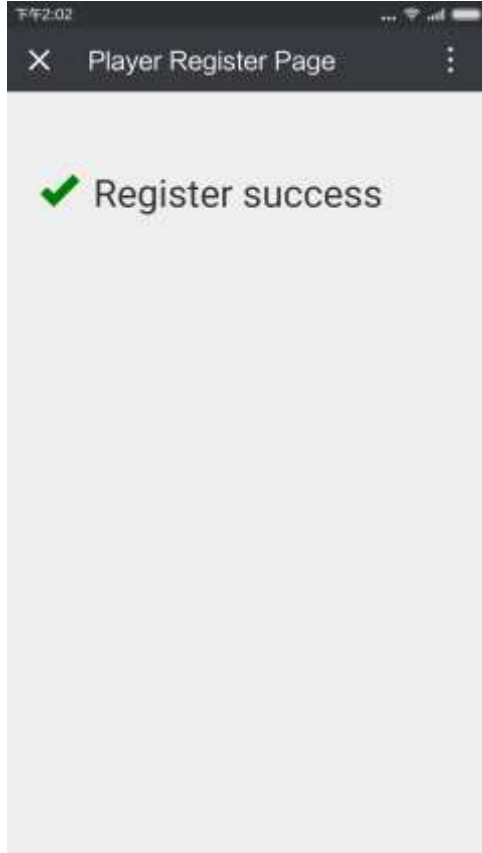
Step 2. Ensure that the phone is online and scan the QR code, it shows the player registration screen:





The screenshot shows a mobile application interface for registering a player. At the top, the status bar displays the time as 下午2:01 and various system icons. Below the status bar is a dark header with a close button (X), the title 'Player Register Page', and a menu icon (three dots). The main content area is titled 'Register Player' with a green icon. It is divided into two sections: 'Player information' and 'Account information'. Under 'Player information', there is a text input field containing the alphanumeric string '5269c79aef3e00000349' and a 'Description' field. Under 'Account information', there is a text input field with the email 'xyrachel@hotmail.com', a password field with masked characters, and a checked checkbox labeled 'Remember username and password'. At the bottom, there are two buttons: a grey 'Reset' button with a circular arrow icon and a green 'Register' button with a right-pointing arrow icon.

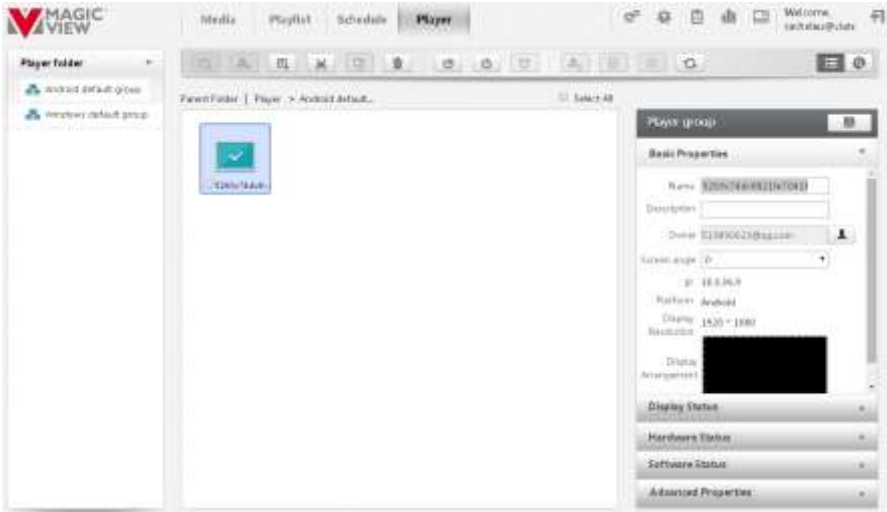
Step 3. Users need to fill in the account and password, click "register" button, it will show:



Now, the player will display the registered information:



After login SAAS with this account, users will find this player has been located in Android default group.



## 1.4. Video Wall

### 1.4.1. Set to SOC Group

Before designing layout, creating and publishing playlist, users need set the players as soc group.

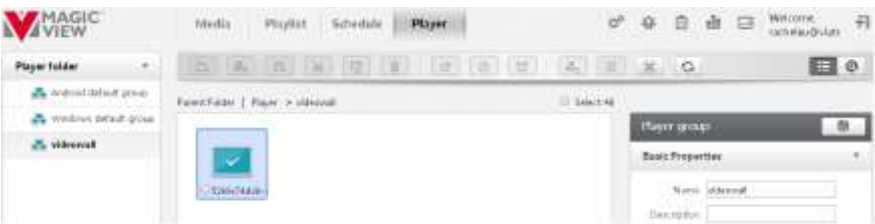
Step 1. Create new group;

Step 2. Move the players from Android default group to new group.

Step 3. Click  to set soc group.



After combination, users can find only master client on the page.

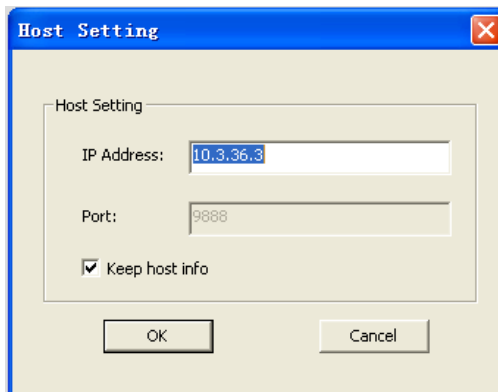


### 1.4.2. Use ChromeWall Utility to config video wall layout

Step 1. Install and run ChromeWall Utility. Click "Connect" icon at the top left of the window.

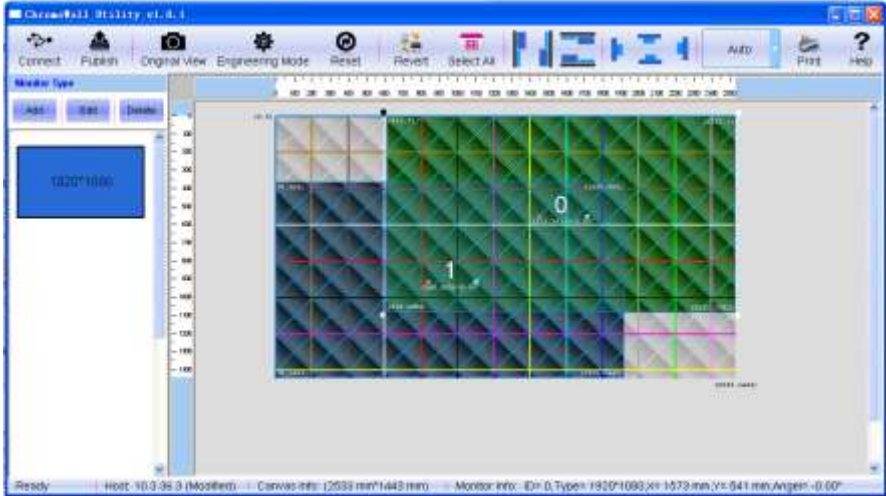


Step 2. In the pop-up box, enter the IP address of master client. The port number is default, click OK.



Users can check the IP address of master client from SAAS player page.

Step 3. Utility will automatically detect the number of the current screens with the default resolution after connecting to the master client as shown below:



Step 5. Click “Edit” button from “Monitor Type” area at left window. And pop up the “Edit monitor type info” dialog box to modify screen information:

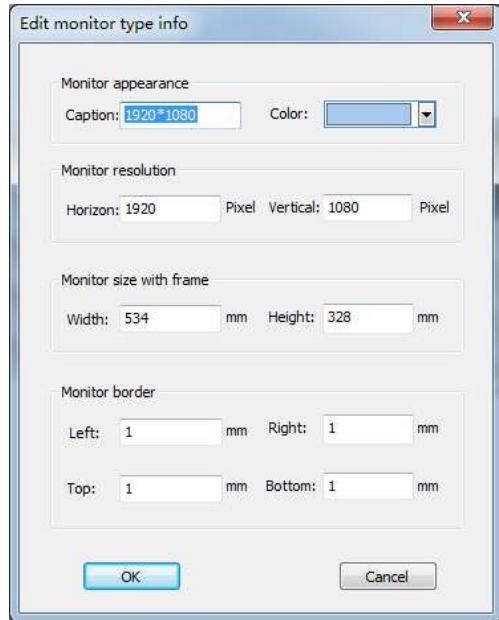
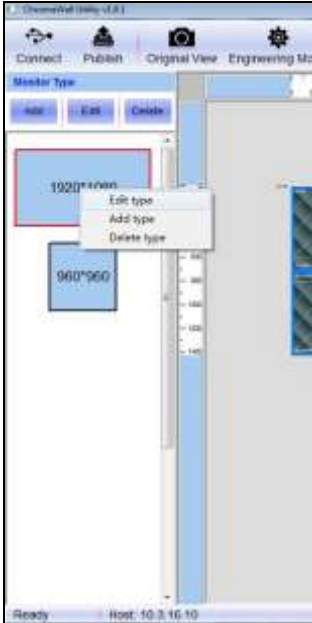
Caption : Can be defined as a custom name (usually by default for screen resolution)

Color : Screen background color

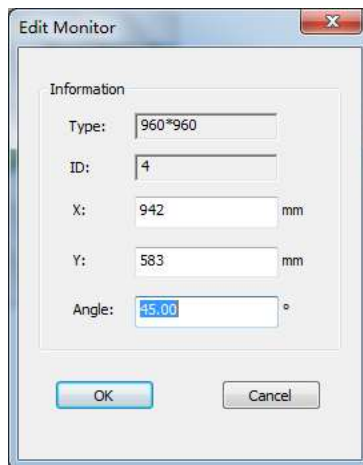
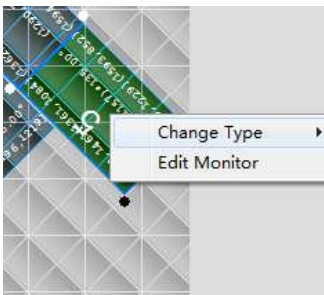
Monitor resolution : Screen resolution (Default is not modified)

Monitor Size With Frame : Enter the actual size of the screen (with border)

Monitor Border : Enter the width of the border of the screen.



Step 6. Select a screen to right-click to select “Edit Monitor” , pop-up “Edit Monitor” dialog box to adjust the screen angle and location

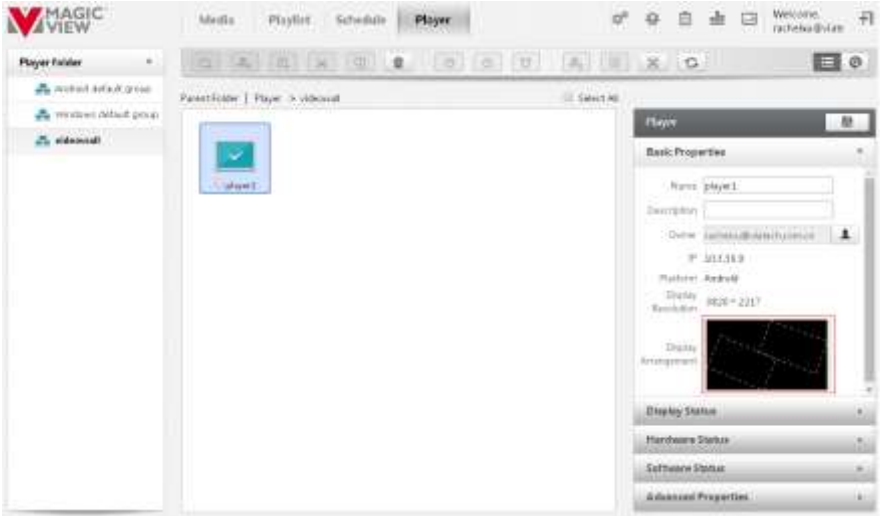


Step 7. Place the position and angle of all the screens same with the actual client screens' . Then click "Publish" button to send the videowall' s layout to server.



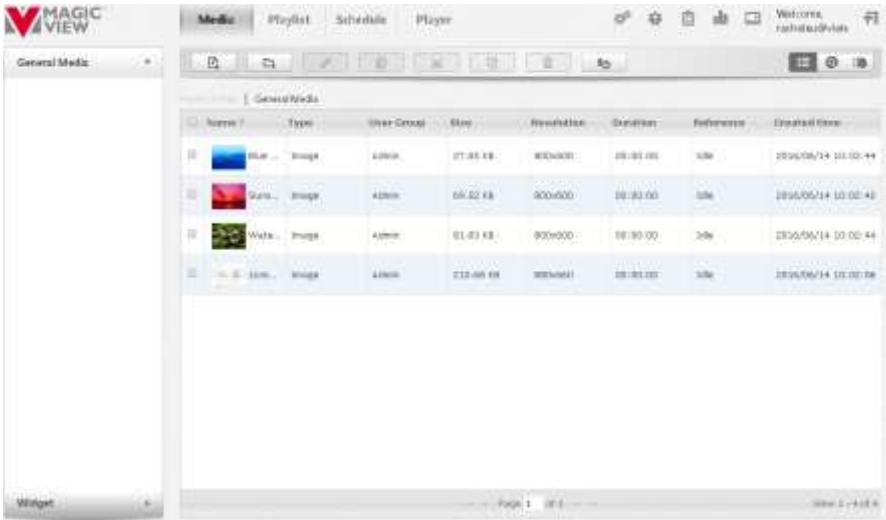
Step 8. After refresh player management page of SAAS web UI, users will find the updated layout of video wall on the right side of the web ui.





## 1.5. Playlist Publish

### 1.5.1. Upload media files



Step 1: click “Media” button;

Step2: choose “General Media” type;

Step3: click  to upload media files.




Step 4: The uploaded files are in the audit list. Users need approve them before using:

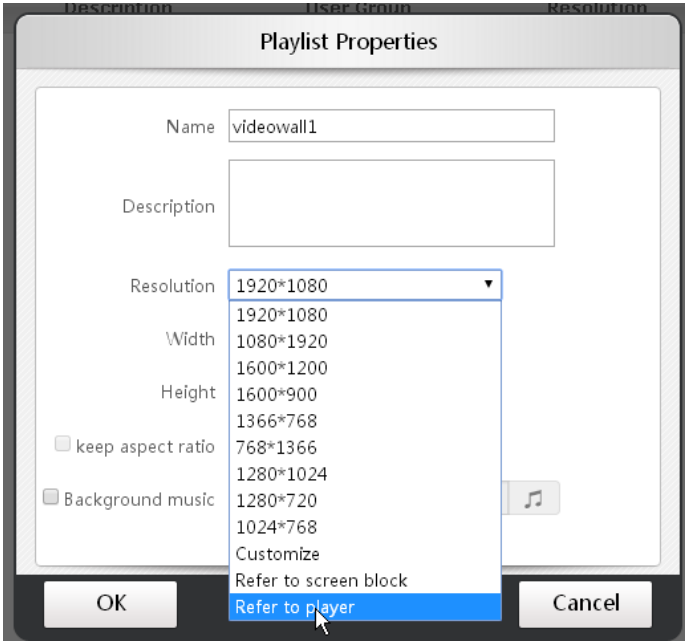


## 1.5.2. Create playlist



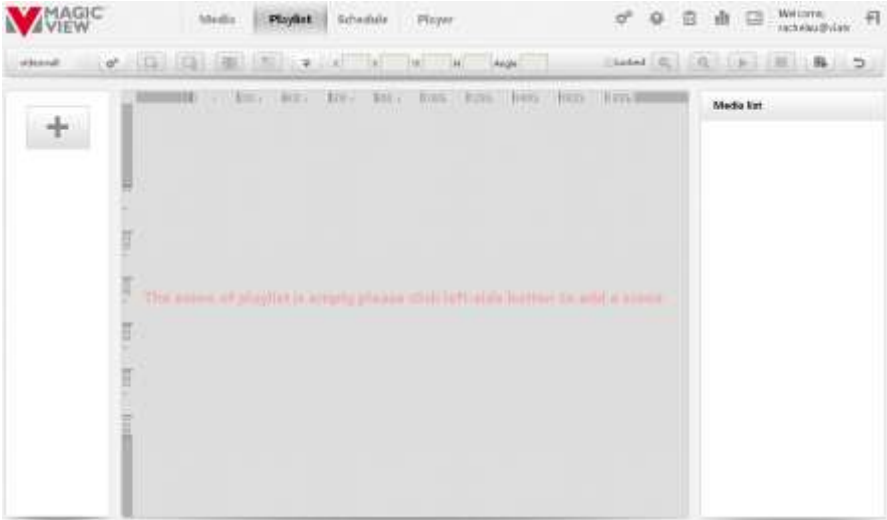
Step 1: click “Playlist” button.


Step 2: click  and pop-up a dialog, fill in name and resolution (in pixels):

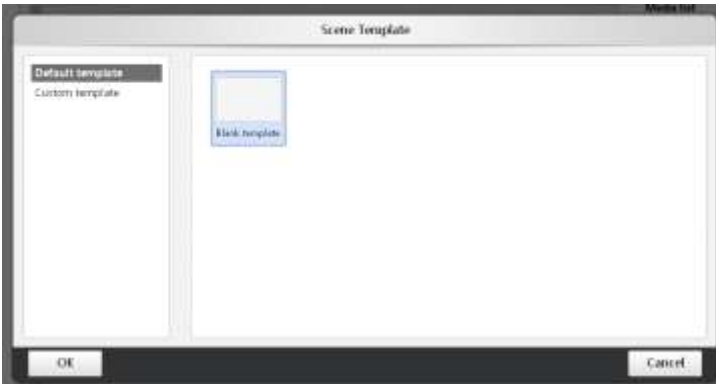


Step 3: Select videowall group and begin to design playlist in the designer area:

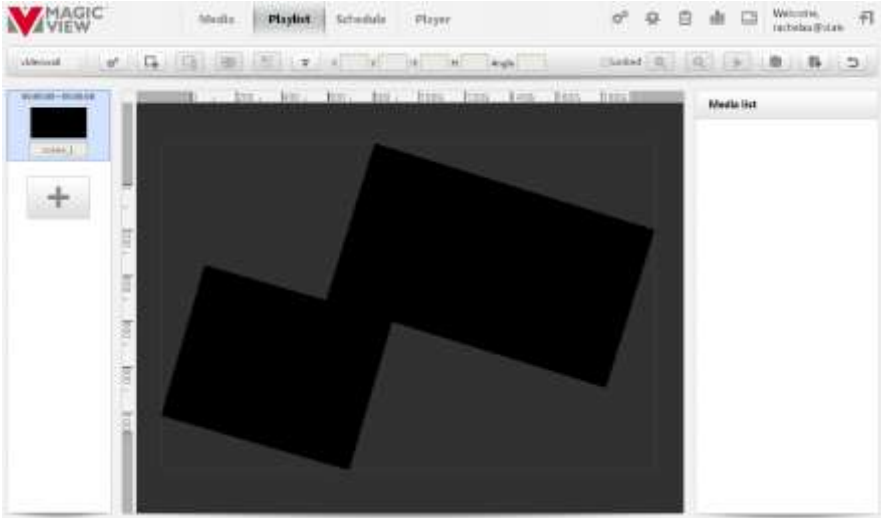




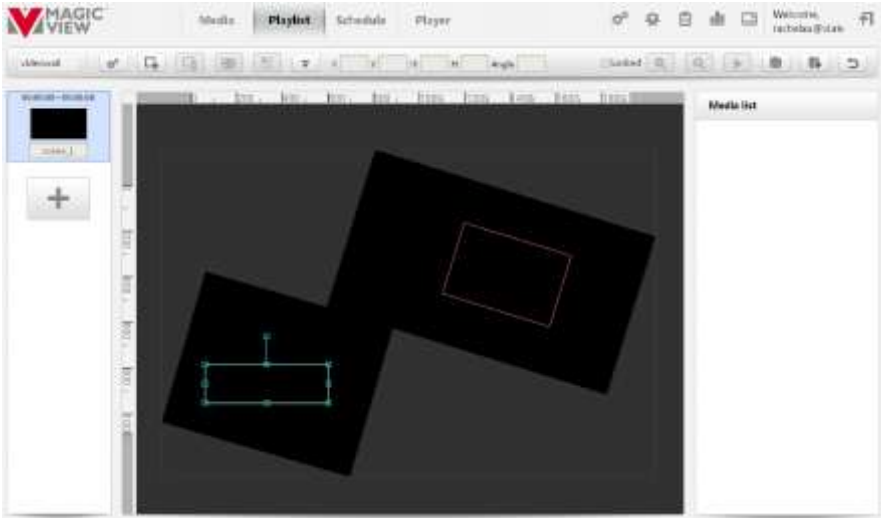
Step 4: click  at left side and choose template to create new scene:




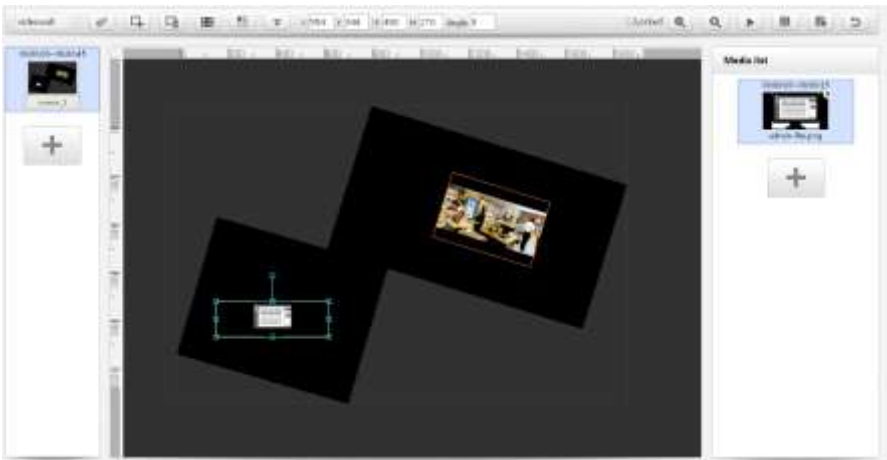
Now users can find the videowall layout in the designer area:



Step 5: click  to create layers:



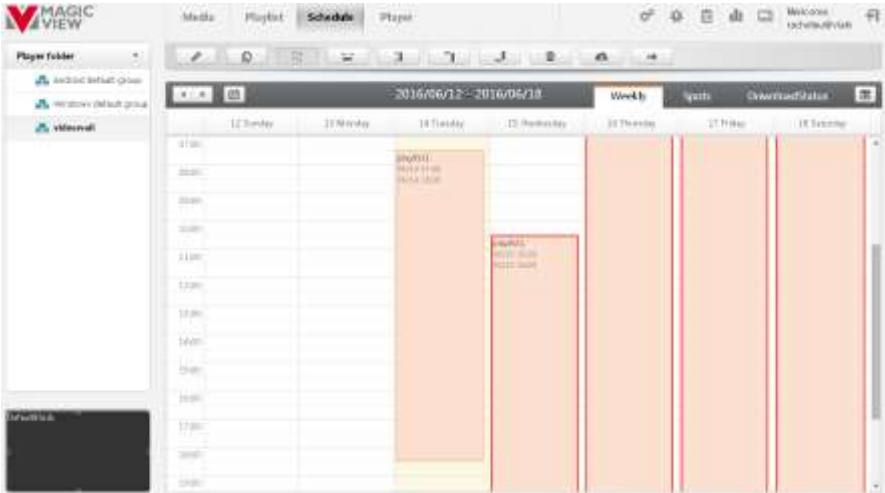
Step 6: Add media files to layers. Select the layer you need to add, and then click  to add the media file in the media list.



Step 7: Click the button  to save the scene and approve it.

The next step is to schedule the playlist.

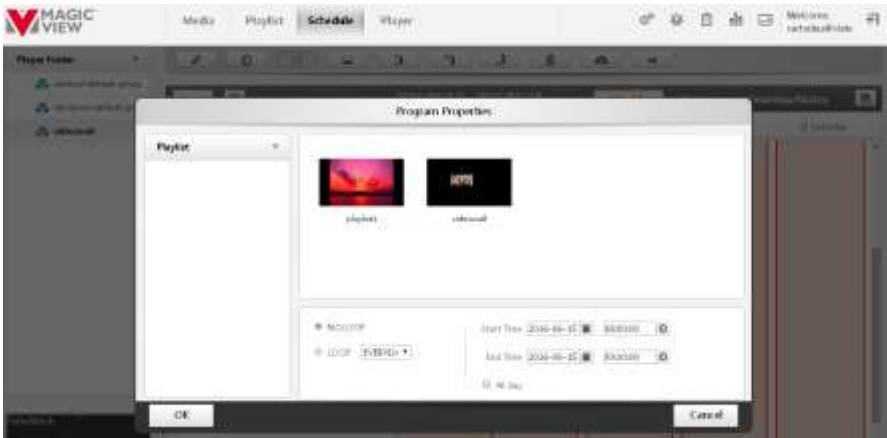
### 1.5.3. Schedule



Step 1: Select the player group.

Step 2: Move the pointer to the calendar region. Press the right-button and drag the mouse, the following dialog box will pop up.

Step 3: Set start/end date and time.



Step 4: Click  to publish program.



After the steps of “upload media files”, “create playlist” and “schedule”, we finish the process of program designing and publishing. If network is working, player will playback the program after downloading the playlists.

## 2. Player OSD Setting

Use the keyboard hotkey to evoke OSD menu, and set player' s attributes.



### 2.1. Network Setting

Wireless Network :



Wired Network :




## 2.2. Server Register

Enter Server Register page and find the QR code. And shows the registration and network status.

Users can refer [section 1.3 Player register online](#).

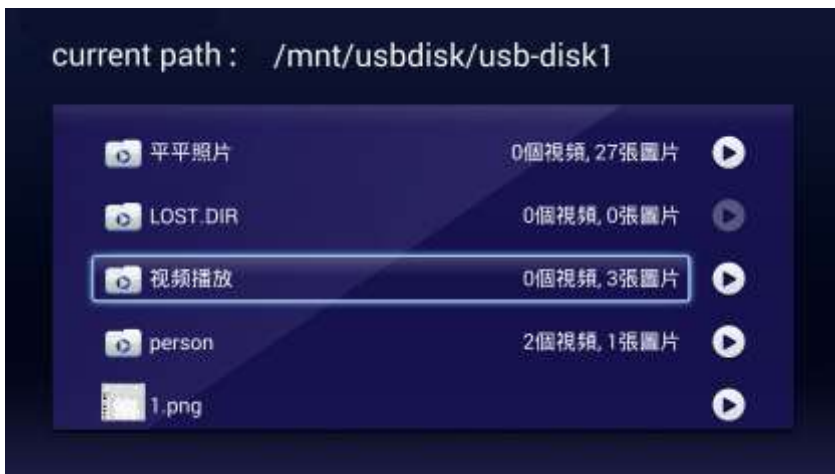


## 2.3. Local Playback

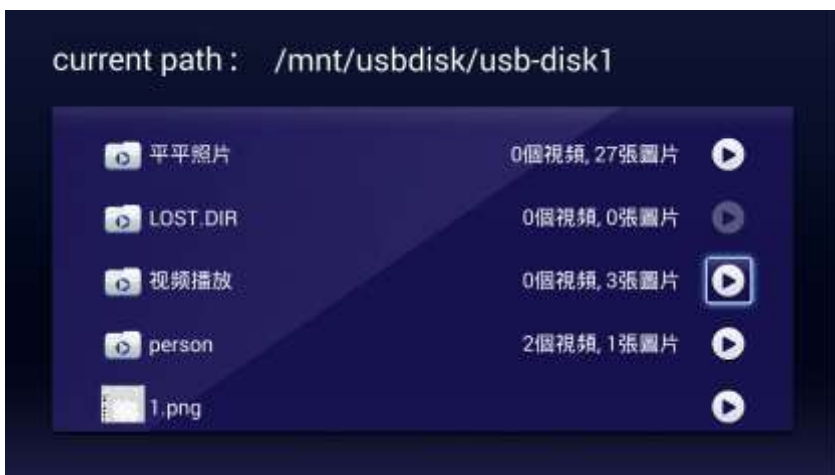
Copy the media files to USB disk and plug in the player. Click the hotkey  to invoke OSD menu.



点击“本地播放”，找到usb盘下需要播放的目录，例如“视频播放”：  
Click "local player" to find the playback folder in USB disk, such as "video playback":



Click  and the media files in this folder will loop playback.



## 2.4. General Setting

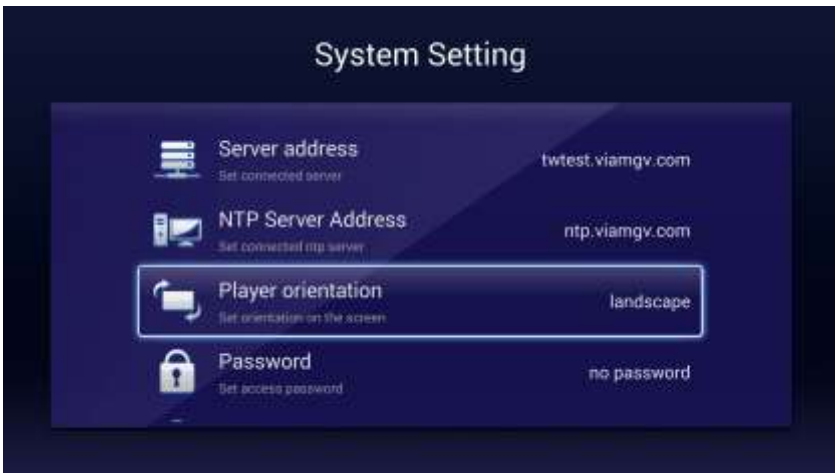
Server Address :



NTP Server Address :



Player Orientation :







Set Password :



Picture Switch Time :



Silence Mode :



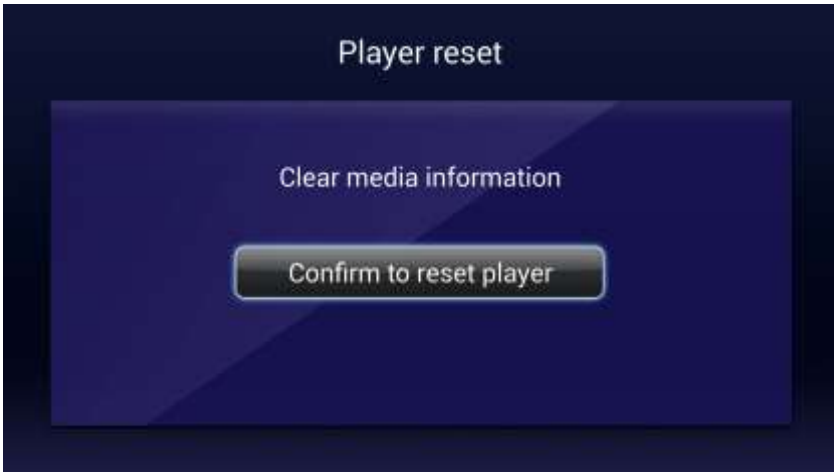
Set Language :



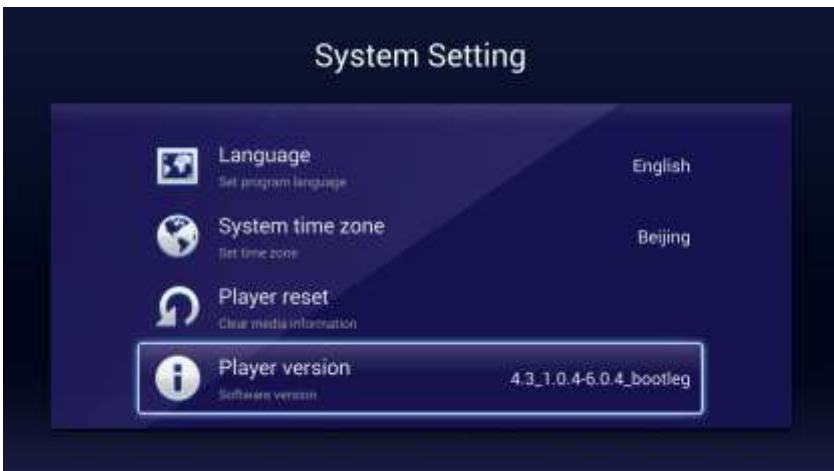
Set System Time Zone :



Player Reset :



Player Version :



## 3. Appendix

### 3.1. Player install BSP

Step 1. Format SD disk with ext2 format :

```
# mkfs.ext2 /dev/sdb1 /* suppose dev/sdb1  
# mount /dev/sdb1 /mnt
```

Step 2. Copy the installation package to SD disk.

Step 3. Plug in SD disk to Elite, the system will be installed automatically

Step 4. Format a SD card as EXT4 to store media files

```
# ext4mkfs.ext4 /dev/sdb1
```

Step 5. Plug the sd card in to Elite and boot.